



THE
CORPORATE
EXPERIENCE



ROWLEY MANOR
COUNTRY HOUSE
HOTEL

01482 848248
info@rowleymanor.com

ROWLEY ROAD
LITTLE WEIGHTON
HU20 3XR





We are delighted that you are considering The Rowley Manor Hotel for your forthcoming event.

Rowley Manor offers all the grandeur associated with a Grade II listed Georgian Manor House with excellent meeting and conference facilities.

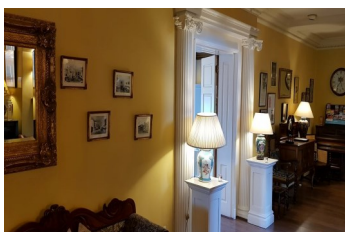
Our management team offers a bespoke service to all of our clients, while offering an exclusive venue.

Boasting a wonderful location only a few minutes from the A63 and nestling in the East Yorkshire countryside the hotel offers both easy access and a unique venue for meetings and team building events.

Rowley Manor is a privately owned hotel with a strong emphasis on customer care and attention to detail. We appreciate the importance of your event and our experienced staff is available to assist with all aspects of your event from start to finish.

Rowley Manor has 16 delightful bedrooms all with en suite bath/shower room, flat screen television, a hospitality tray and of course extremely comfortable beds.

We shall be delighted to show you the facilities that we can offer at a time convenient to you and we look forward to welcoming you to The Rowley Manor.





Conference and Event Meeting Rooms

We have 3 superb function rooms which can accommodate from 2 to 120 guests in various seating styles. Daily and residential packages are available. The Rowley Manor provides the perfect setting for any function you may wish to host

The Pine Room

This traditional Georgian panelled room enjoys natural daylight and ample power sockets. This room is a favourite for intense smaller meetings or alternatively a break out.

Theatre style x 50
Cabaret x 14
Boardroom x 20
Banquet x 30

The View

This room has spectacular views over the grounds and fantastic natural daylight is perfect for meetings and events.

Theatre style x 80
Cabaret x 28
Boardroom x 30
Banquet x 40-50

The Garden Room

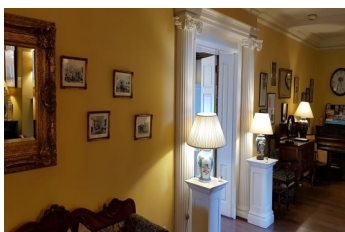
The largest of our rooms, this spacious room enjoys natural daylight and the flexibility that comes with a large open space. The View and Garden Room also offer interconnection for optimum use of facilities.

Theatre style x 100
Cabaret x 48
Boardroom x 50
Banquet x 80 -120 (when connected to The View)





Conference and Event Meeting Package Rates



24 Hour Package £160pp

Included:

- Day delegate package
- 3 course dinner
- Overnight stay
- Full English breakfast

Day Delegate £38pp

Included:

- Tea & coffee on arrival
- Morning tea and coffee with biscuit/pastries
- 2 course lunch or buffet lunch or working buffet lunch
- Afternoon tea and coffee break with cakes or scones
- Water & mints
- Flip chart, projector and screen
- Room hire (numbers below 15 incurs room hire charge)

Room Hire

- Pine Room £100
- The View £150
- Garden Room £200

Sample Menu Choices

2 Course Lunches

Sample Menus

- Coq Au Vin
- Salmon served on a bed of Spinach with a Roast Garlic Cream Sauce
- Butternut Squash Risotto

Desserts

- Chocolate Bourbon Tart
- Lemon Posset with Shortbread Biscuit
- Cheese Plate

Tea & Coffee

Buffet Menu

Sample Menu Hot

- Rowley Fish Pie
- Beef Stroganoff & Rice
- Asparagus and Baby Vegetable Tartlets
- Various Salads

Desserts

- Sticky Toffee Pudding
- White Chocolate and Strawberry Cheesecake
- Cheese Plate

Tea & Coffee

Buffet Menu

Sample Menu Cold

- A Selection of Cold Roasted Meats, Smoked and Cured Fish
- Continental & British Cheeses with Chutneys and Pickles
- Vegetarian Lasagne
- Marinated Olives and Sundried Tomatoes
- Seasonal Salads and Hot New Potatoes
- Selection of Breads

Desserts

- Eton Mess
- Cheese Board

Tea & Coffee



Above are sample menus that can be bespoke to your requirements.



Conference Room Information

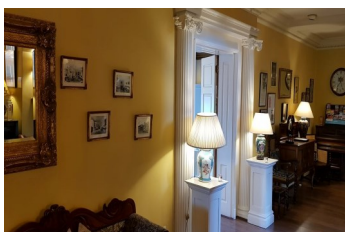
Maximum Capacity

Style / Layout	Board Room	Theatre Style	Class Room	Cabaret	U Shape	Dinner	Dinner Dance
Pine Room	24	50	16	24	20	30	N/A
Garden Suite	50	100	48	48	40	120	100
The View	40	80	36	36	30	50	N/A

The View Room is a section of The Garden Suite that can be partitioned off from the Main Room, providing delegates with the use of two separate smaller function rooms.

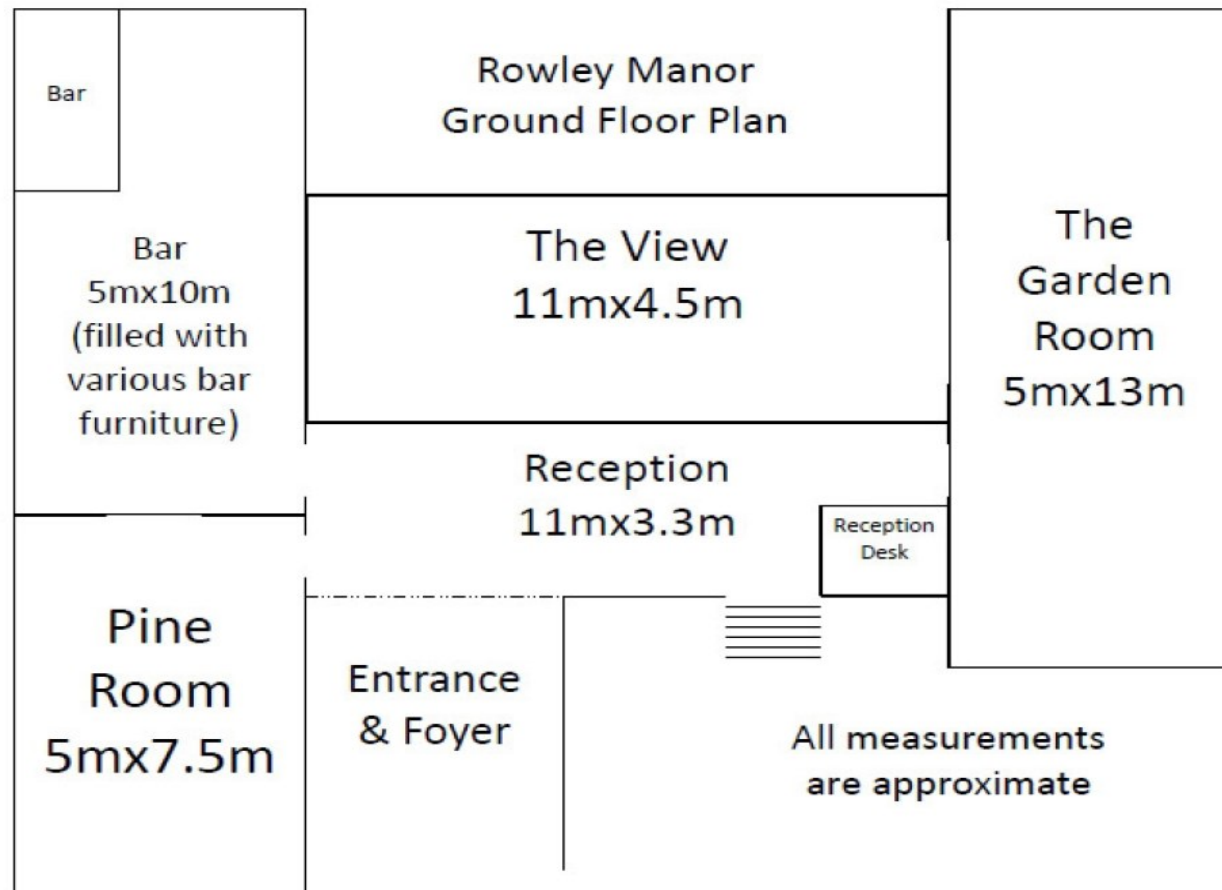
The dimensions for The Garden Suite include The View Suite when the partition is removed.

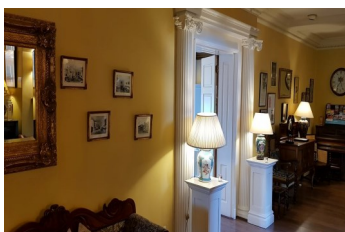
	Dimensions (ft)			Facilities	
	Length	Width	Height	Natural Light	Floor
Pine Room	24ft 1"	17ft 5"	11ft 7"	Yes	Ground
Garden Suite	43ft 10"	18ft 3"	9ft 11"	Yes	Ground
The View	37ft 8"	15ft 3"	9ft 10"	Yes	Ground





Room Layout





Directions

Sat nav : HU20 3XR Rowley Manor Hotel

01482 848248

From M62

The M62 becomes the A63. Leave the A63 at the South Cave and Market Weighton sign, which will lead you to South Cave. Just prior to the clock tower in the village centre, turn right onto Beverley Road and follow the signs for Rowley.

From Hull

Take the Willerby Road, and at the Large Roundabout past Waitrose, turn left onto the A164, take the first right to Swanland. Turn almost immediate right towards Rowley and Raywell. Follow for approximately 2 miles then take a right turn towards Rowley.

From Beverley

Head for Walkington and as you leave the village take the left turn into Little Weighton. At the T-Junction in front of the pond turn right past the Black Horse Pub and then take the first left towards Rowley Church.

